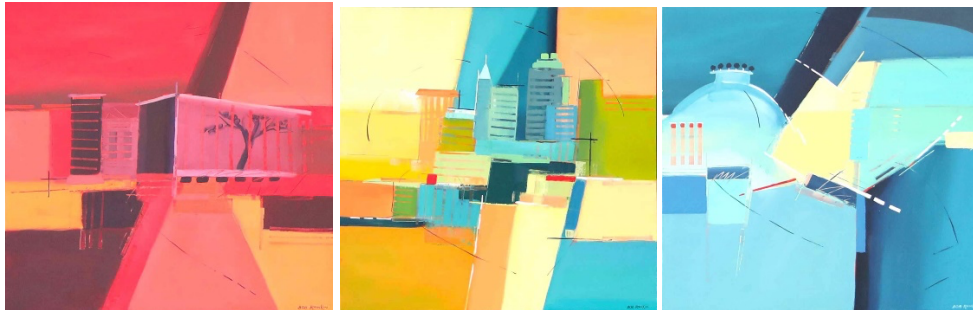


Primary Raleigh 1, 2, 3
by Bob Rankin

Audio Description Script
by Beth McGuire, June 2022



Script

The following is an audio description of *Primary Raleigh, 1, 2, 3* by Bob Rankin. This triptych consists of three 72-inch square, acrylic paintings on canvas. The abstract paintings depict iconic buildings in downtown Raleigh. The paintings' colors change from different shades of red, yellow, to blue as they progress from left to right. The buildings are in the top half of each composition, with geometric shapes in the bottom third. Other geometric shapes above the buildings complement or contrast with the colors of the buildings. Thin straight and curved lines echo selected shapes in the paintings or cross over shapes, suggesting movement in each of the three compositions.

The leftmost painting shows the Raleigh Convention and Performing Arts Complex, with its wide box-like form and Cree Shimmer Wall on its side, which features the silhouette of an ancient oak tree. This scene is rendered in red, maroon, pink, coral, black, and peach.

The center painting highlights the Raleigh skyline in shades of yellow, orange, peach, blue, cream, green, and white. It shows the Wells Fargo Capital Center, the PNC Tower, One Progress Plaza, Two Hanover Square, and other buildings.

The third painting shows the dome of the North Carolina State Capitol in aqua, with its honeysuckle crown in navy blue. An angled, shaded blue shape suggests a building to the right. Four thin pink rectangles stand to the left in front of the

Capitol. Larger swatches of blue, aqua, cream, and white lie between the two buildings.

This description was brought to you by Beth McGuire, an audio describer with Arts Access, a North Carolina nonprofit that works to make the arts accessible to children and adults with disabilities.